

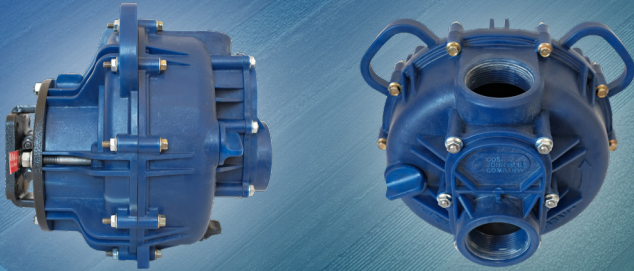


PATENT-PENDING

Vac-U-Seal Poly 2" Self-Priming Pumps

PSP-3240

Poly-Centrifugal Pumps that are efficient, versatile, and built to last.



- 200 GPM Max Flow
- 45 PSI Max Pressure
- 112 GPM @ 25 PSI
- Required Horsepower: 5Hp
- 2" Port Size
- Vac-U-Seal Impeller
- Close-coupled Shaft
- Fits 3/4" Diameter Shaft
- Double Wet Seal Assembly
- Chemical Resistant Materials

If you need a pump that's portable, durable, and affordable, this new lightweight poly-pump is just what you need.



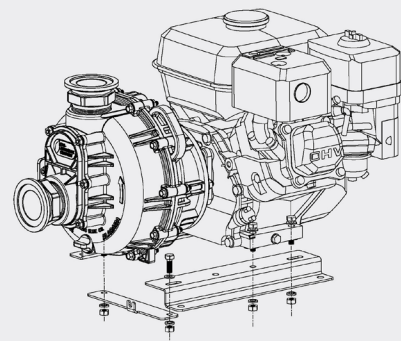
< PSP-3240-G5H

AVAILABLE MODELS:

PSP-3240:	Engine mount, 2" FPT Ports
PSP-3240-FLG:	Engine mount, 220 Flange Adapters
PSP-3240-E:	Electric Motor mount, 2" FPT Ports
PSP-3240-EFLG:	Electric Motor mount, 220 Flange Adapters
PSP-3240-G5H:	2" FPT Ports with Honda GX160 Engine
PSP-3240-G5HFLG:	220 Flange with Honda GX160 Engine
PSP-3240-G6H:	2" FPT Ports with Honda GX200 Engine
PSP-3240-G6HFLG:	220 Flange with Honda GX200 Engine
116287-01	Optional Screw-in 220 Flange Adapter
116395-91	Base Rail Kit - 2" Poly Pump

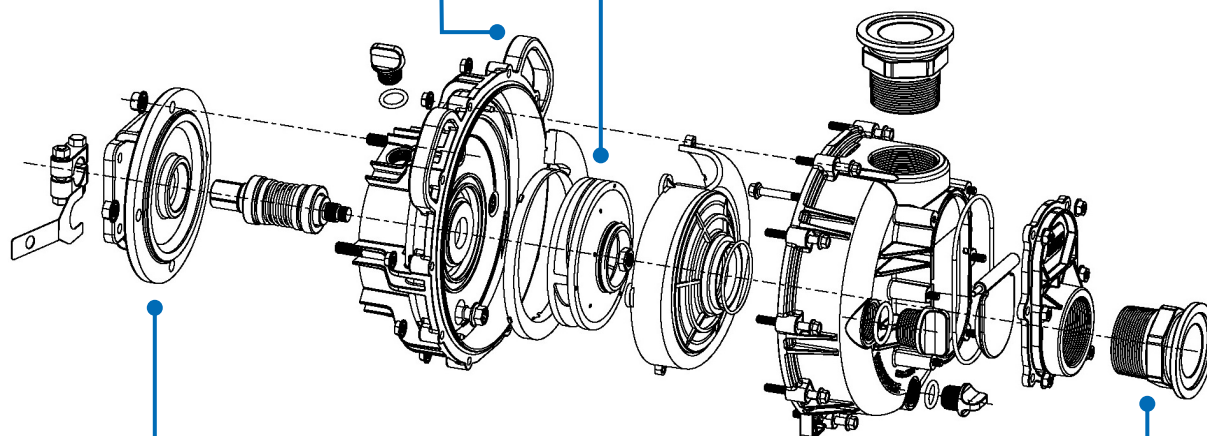
PRODUCT FEATURES

- Fully-assembled from the Factory—ready to be attached to power source immediately.
- Double Wet Seal Assembly—pump can be run dry without causing seal failure, seal is antifreeze cooled. (Antifreeze is pre-filled from the factory.)
- Closed Impeller Technology—pump efficiency improves over time as the impeller wears.
- Polypropylene Body, FKM and Viton® Seals, 316SS Impeller Shaft for excellent chemical resistance.
- Pump can be removed, or engine can be replaced without having to disassemble the pump.
- 1" FPT pressure access & 1/2" FPT drain port



Convenient carry handles allowing clearance for discharge elbow installation.

Vac-U-Seal impeller design creates a vacuum between the impeller and seal. Lack of pressure on the seal face minimizes seal wear resulting in longer seal life.

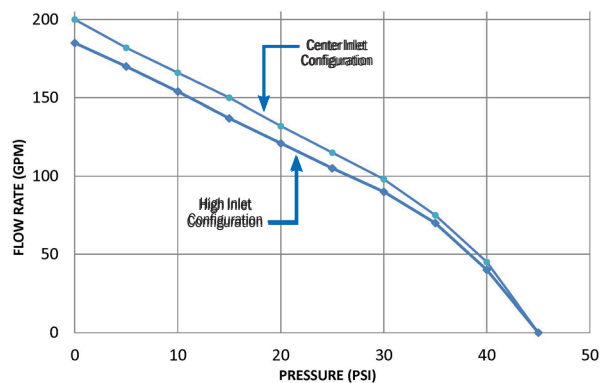


Close-coupled shaft with Cast iron engine mount for mount strength and heat dissipation from the motor.

Screw-in flange fittings are standard on -FLG models, and optional on all other models.



PUMP FLOW CURVES



Shaft locating tool installed at the factory which prevents shaft displacement during installation on power source.

2-in-1 Inlet Design (patent pending): Use center inlet for maximum flow or high inlet for drain back capability.



The Pump Company • Since 1886

“Guaranteed to Do the Job”

165 Electronics Blvd. SW, Huntsville, AL 35824 USA

Phone: 800-253-BLUE • Fax: 256-721-9091 • www.cds-johnblue.com

Publication# PSP3240-APR18-v1.1

© CDS-John Blue Company • Printed in the USA

